



**1.3 SANITARY  
ISO2037**

# Catalog



Table of Contents page 53—66

## ISO2037 FITTINGS

Introduction & Order Information

Bends

- 8009 S2WK..... 55
- 8010 SL2WS..... 55
- 8011 S2WCL..... 55
- 8012 SL2WS..... 56

Tees

- 8013 S7W..... 56
- 8014 SL7WWW..... 56
- 8015 S7RW..... 57

Reducers

- 8016 SL31..... 57
- 8017 SL32..... 57

## CLAMP UNION ISO2037

Ferrules

- 8018 S14MMP..... 59

Gaskets

- 8019 40MP / 40MO..... 59

Solid End Caps

- 8020 16AMP..... 59

Clamps

- 8021 A13MHM..... 59

## SMS UNIONS

Introduction & Order Information

- 8022 SMS-13..... 62
- 8023 SMS-14..... 62
- 8024 SMS-15..... 62
- 8025 SMS-16..... 63
- 8026 SMS-14S..... 63
- 8027 SMS-15S..... 63
- 8028 SMS-14SS..... 64
- 8029 SMS-15SS..... 64
- 8030 SMS-14B..... 64
- 8031 SMS-13RS..... 65
- 8032 SMS-13RB..... 65
- 8033 SMS-13RBN..... 65
- 8034 SP2..... 66



# ISO2037 Fittings

Weld to the Inch tubes



All bends, tees, and reducer all acc. to ISO standard  
EACH FITTINGS PACKAGING HAS A BARCODE

### ISO2037 Fittings

International standard ISO2037 was prepared by technical committee ISO/TC5, These are stainless steel tubes and stainless steel fittings that are commonly used all over Europe.

**GEMO** ISO2037 Fittings meet

**ISO** requirements.



#### ISO2037

#### FITTINGS SPECIFICATIONS....

Size Range: 25 OD through 101.6 OD  
Materials: 1.4301(304), 1.4404(316L)  
Surface Finish:  
Mechanically Polished  
Internal 20Ra (0.51µm), External 32Ra (0.8µm)  
No. 7 - ID & OD  
No. 5 - OD only  
No. 3 - ID only  
No. 1 - unpolished  
Custom - built upon request

#### ORDERING SPECIFICATIONS....

- Specify:
- Description
  - Code No.
  - Size
  - Material
  - Surface Polish Requirements
  - Quantity

Description	Item No	Size	Material	Surface	Quantity
S2WK	8009	51	1.4301	NO.7	500

#### NOTES THE DIMENSION TABLES

- All Dimensions are according to ISO2037 standard.
- Wall Thickness: Fittings OD25mm-51mm sizes are manufactured with 1.2mm wall thickness. The OD63.5mm-OD76.1mm sizes are manufactured with 1.6 wall thickness. And the OD101.6 fittings are manufactured with 2.0mm wall thickness.

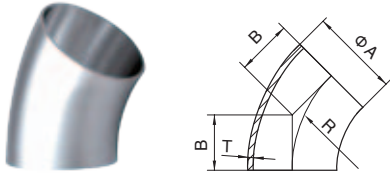
# ISO2037 FITTINGS

Part for Inch tubes

Wall Thickness: Fittings OD25-OD51mm sizes can also manufactured with 1.6mm wall thickness.

Finish: OD: Semi bright. ID: Mirror  
Connections: Welding ends

## S2WK 45°short elbow

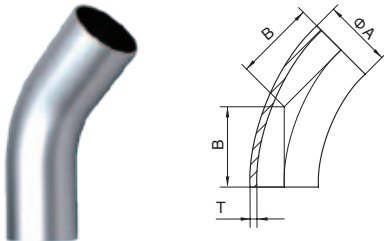


### Basic Ordering Number: 8009

NO.	Size	A	R	T
8009 02500	25	25	15.53	1.2
8009 03800	38	38	23.61	1.2
8009 05100	51	51	31.69	1.2
8009 06350	63.5	63.5	39.45	1.6
8009 07600	76	76.1	47.28	1.6
8009 10160	101.6	101.6	63.0	2.0

\*\*1.4301 and 1.4404 are available.

## SL2WS 45°Long elbow

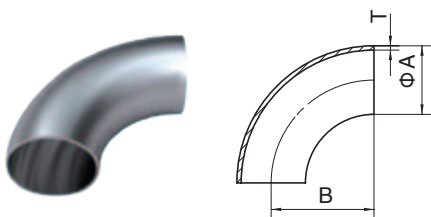


### Basic Ordering Number: 8010

NO.	Size	A	B	T
8010 02500	25	25	42.53	1.2
8010 03800	38	38	56.61	1.2
8010 05100	51	51	68.69	1.2
8010 06350	63.5	63.5	78.45	1.6
8010 07600	76	76.1	85.28	1.6
8010 10160	101.6	101.6	103.0	2.0

\*\*1.4301 and 1.4404 are available.

## S2WCL 90°Short elbow



### Basic Ordering Number: 8011

NO.	Size	A	B	T
8011 02500	25	25	37.5	1.2
8011 03800	38	38	57.0	1.2
8011 05100	51	51	76.5	1.2
8011 06350	63.5	63.5	95.25	1.6
8011 07600	76	76.1	114.15	1.6
8011 10160	101.6	101.6	152.1	2.0

\*\*1.4301 and 1.4404 are available.

NOTE! Treatment: Annealed.

\*\*All measurements are in millimeters (mm)  
Conversion to inches, 25.4mm=1inch

# ISO2037 FITTINGS

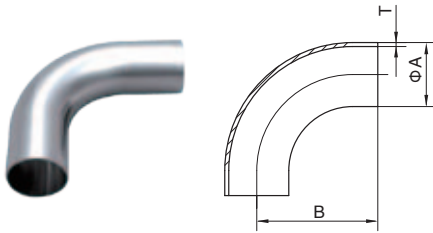
Part for Inch tubes

Finish: OD: Semi bright. ID: Mirror  
Connections: Welding ends

Wall Thickness: Fittings OD25-OD51mm sizes can also be manufactured with 1.6mm wall thickness.

1.3

## SL2WS 90° Long bend

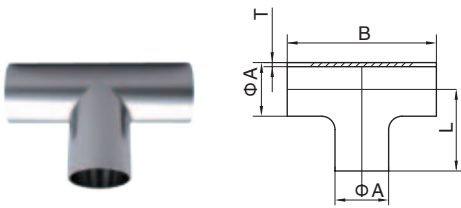


### Basic Ordering Number: 8012

NO.	Size	A	B	T
8012 02500	25	25	55	1.2
8012 03800	38	38	70	1.2
8012 05100	51	51	82	1.2
8012 06350	63.5	63.5	105	1.6
8012 07600	76	76.1	110	1.6
8012 10160	101.6	101.6	150	2.0

\*\*1.4301 and 1.4404 are available.

## S7W Tee with straight-end

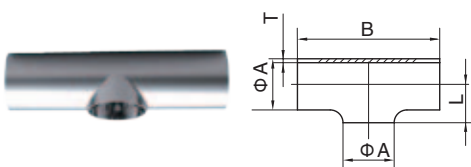


### Basic Ordering Number: 8013

NO.	Size	A	B	L	T
8013 02500	25	25	110	55	1.2
8013 03800	38	38	140	70	1.2
8013 05100	51	51	164	81	1.2
8013 06350	63.5	63.5	210	105	1.6
8013 07600	76	76.1	220	110	1.6
8013 10160	101.6	101.6	300	150	2.0

\*\*1.4301 and 1.4404 are available.

## SL7WWW Tee without straight-end



### Basic Ordering Number: 8014

NO.	Size	A	B	L	T
8014 02500	25	25	110	15	1.2
8014 03800	38	38	140	21	1.2
8014 05100	51	51	164	29	1.2
8014 06350	63.5	63.5	210	36	1.6
8014 07600	76	76.1	220	44	1.6
8014 10160	101.6	101.6	300	58	2.0

\*\*1.4301 and 1.4404 are available.

NOTE! Treatment: Annealed.

\*\*All measurements are in millimeters (mm)  
Conversion to inches, 25.4mm=1inch

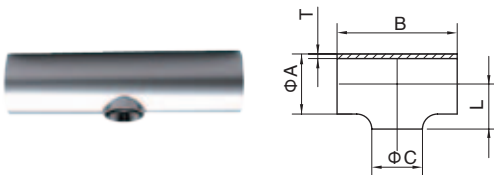
# ISO2037 FITTINGS

Part for Inch tubes

Finish: OD: Semi bright. ID: Mirror  
Connections: Welding ends

Wall Thickness: Fittings OD25-OD51mm sizes can also manufactured with 1.6mm wall thickness.

## S7RW Reducing tee without straight-end

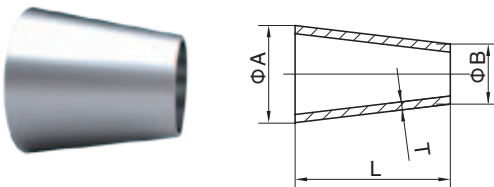


### Basic Ordering Number: 8015

NO.	Size	A	B	C	L	T
8015 03825	38×25	38	140	25	21	1.2
8015 05125	51×25	51	164	25	29	1.2
8015 05138	51×38	51	164	38	29	1.2
8015 63525	63.5×25	63.5	210	25	36	1.6
8015 63538	63.5×38	63.5	210	38	36	1.6
8015 63551	63.5×51	63.5	210	51	36	1.6
8015 07625	76×25	76.1	220	25	44	1.6
8015 07638	76×38	76.1	220	38	44	1.6
8015 07651	76×51	76.1	220	51	44	1.6
8015 76635	76×63.5	76.1	220	63.5	44	1.6
8015 101625	101.6×25	101.6	300	25	58	2
8015 101638	101.6×38	101.6	300	38	58	2
8015 101651	101.6×51	101.6	300	51	58	2
8015 1016635	101.6×63.5	101.6	300	63.5	58	2
8015 101676	101.6×76	101.6	300	76.1	58	2

\*\*1.4301 and 1.4404 are available.

## SL31 Concentric reducer

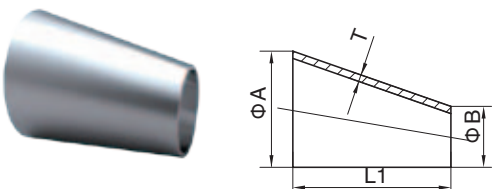


### Basic Ordering Number: 8016

NO.	Size	A	B	L	T
8016 03825	38×25	38	25	39	1.2
8016 05125	51×25	51	25	57	1.2
8016 05138	51×38	51	38	39	1.2
8016 63525	63.5×25	63.5	25	74	1.6
8016 63538	63.5×38	63.5	38	57	1.6
8016 63551	63.5×51	63.5	51	39	1.6
8016 07625	76×25	76.1	25	92	1.6
8016 07638	76×38	76.1	38	74	1.6
8016 07651	76×51	76.1	51	57	1.6
8016 76635	76×63.5	76.1	63.5	39	1.6
8016 101651	101.6×51	101.6	51	95	2.0
8016 1016635	101.6×63.5	101.6	63.5	78	2.0
8016 101676	101.6×76	101.6	76	60	2.0

\*\*1.4301 and 1.4404 are available.

## SL32 Eccentric reducer



### Basic Ordering Number: 8017

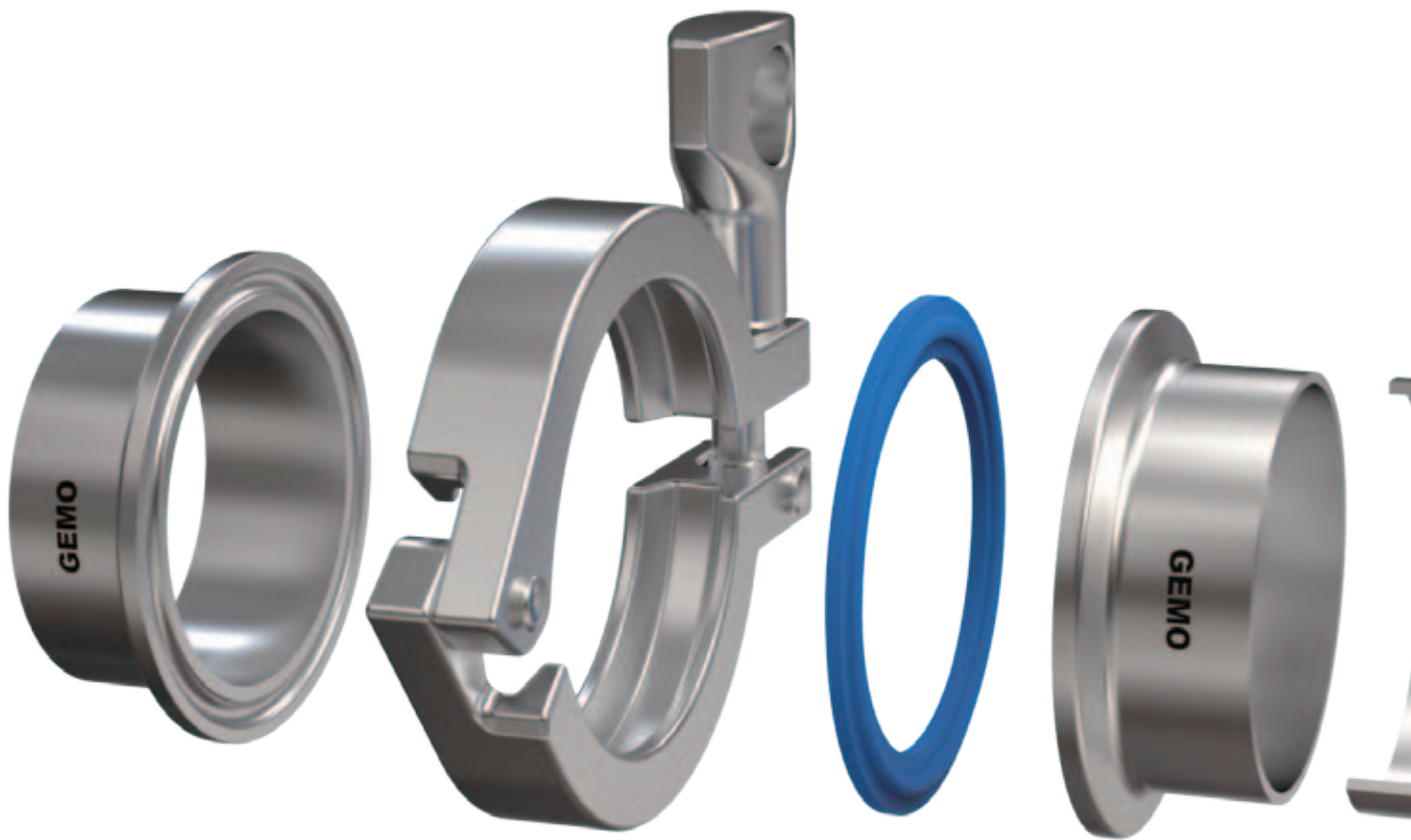
NO.	Size	A	B	L1	T
8017 03825	38×25	38	25	46	1.2
8017 05125	51×25	51	25	68	1.2
8017 05138	51×38	51	38	47	1.2
8017 63525	63.5×25	63.5	25	92	1.6
8017 63538	63.5×38	63.5	38	70	1.6
8017 63551	63.5×51	63.5	51	44	1.6
8017 07625	76×25	76.1	25	117	1.6
8017 07638	76×38	76.1	38	92	1.6
8017 07651	76×51	76.1	51	68	1.6
8017 76635	76×63.5	76.1	63.5	47	1.6
8017 101651	101.6×51	101.6	51	117	2.0
8017 1016635	101.6×63.5	101.6	63.5	94	2.0
8017 101676	101.6×76	101.6	76	74	2.0

\*\*1.4301 and 1.4404 are available.

NOTE! Treatment: Annealed.

\*\*All measurements are in millimeters (mm)  
Conversion to inches, 25.4mm=1inch

## Clamp union ISO2037



Clamp ferrule acc. To ISO2037.

13MHHM Double pin heavy duty clamp in page 16 can apply to ISO2037

EACH FITTINGS PACKAGING HAS A BARCODE



# CLAMP UNION ISO2037

Part for Inch tubes

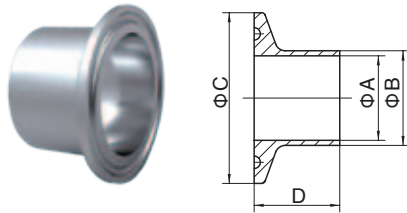
Wall Thickness: Fittings OD25-OD51mm sizes can also manufactured with 1.6mm wall thickness.

## TUBES AND FITTINGS **GEMO**

Finish: OD: Semi bright. ID: Semi bright

1.3

### S14MMP

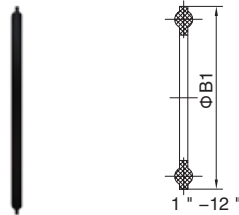


### Basic Ordering Number: 8018

NO.	Size	A	B	C	D
8018 02500	25	22.5	25	50.5	21.5
8018 03200	32	29.5	32	50.5	21.5
8018 03800	38	35.5	38	50.5	21.5
8018 05100	51	48.5	51	64.0	21.5
8018 06350	63.5	60.3	63.5	77.5	21.5
8018 07600	76	72.9	76.1	91.0	21.5
8018 10160	101.6	97.6	101.6	119.0	21.5

\*\*1.4301 and 1.4404 are available.

### 40MP



### Basic Ordering Number: 8019

NO.	Size	B1
8019 02538	25-38	50.5
8019 05100	51	64
8019 06350	63.5	77.5
8019 07600	76	91
8019 10160	101.6	119

\*\*Silicone, EPDM, FPM and PTFE are available.

### 16AMP

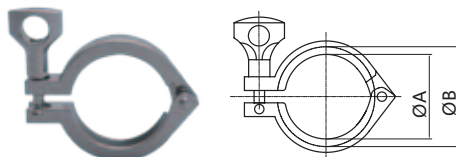


### Basic Ordering Number: 8020

NO.	Size	A	B
8020 02538	25-38	50.5	6.4
8020 05100	51	64.0	6.4
8020 06350	63.5	77.5	6.4
8020 07600	76	91.0	6.4
8020 10160	101.6	119.0	7.9

\*\*1.4301 and 1.4404 are available.

### A13MHM



### Basic Ordering Number: 8021

NO.	Size	A	B
8021 02538	25-38	44.4	53.6
8021 05100	51	57.8	67
8021 06350	63.5	71.4	80.6
8021 07600	76	84	94.2
8021 10160	101.6	110	122.2

\*\*Only 1.4301 is available.

NOTE!

\*\*All measurements are in millimeters (mm)  
Conversion to inches, 25.4mm=1inch

## SMS Unions



SMS Unions

All acc. to Swedish Standard

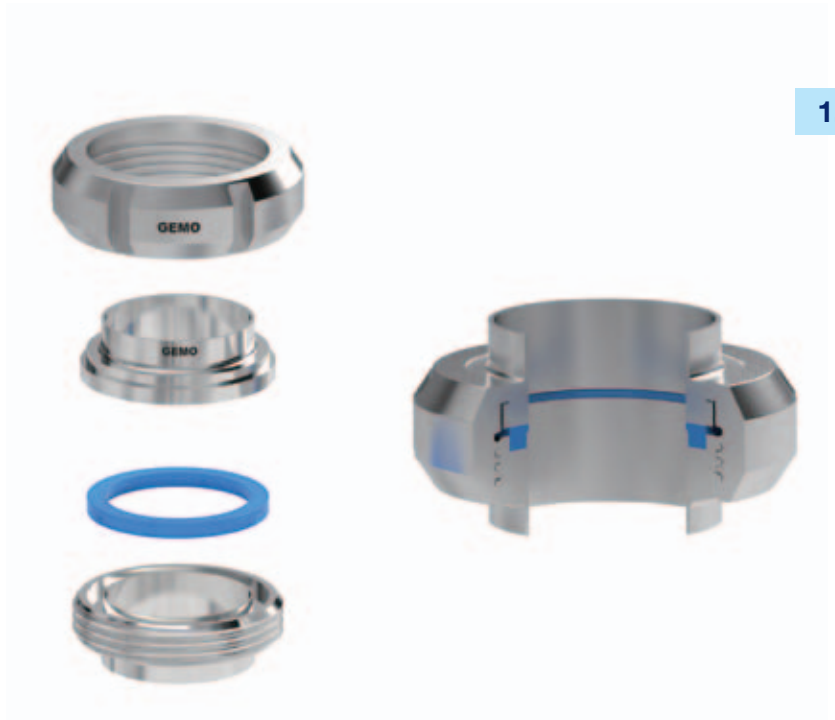
EACH FITTINGS PACKAGING HAS A BARCODE

\*\*All measurements are in millimeters (mm)  
Conversion to inches, 25.4mm=1inch

## SMS UNIONS

SMS union is the Swedish standard hygienic fitting. It can be recognized by the round slotted nut and square section joint ring. Probably the most widely used hygienic fitting worldwide, there is always a small crevice between the face of the male spigot and the liner. Therefore, it facilitates the removal of sections of pipe work without the need of to disturb adjacent sections.

**GEMO** SMS Union meet



# SMS

requirements.

### FITTINGS SPECIFICATIONS....

Size Range: OD.25 through OD.101.6  
 Materials: 1.4301(304), 1.4404(316L)  
 Processing: Forging  
 Machined by CNC  
 Internal 20Ra(0.51µm)  
 Working Pressure Range, (Fully Forged Unions):  
 SIZE 25 - 38 Max. Working Pressure 40 Bar @ 20°C  
 SIZE 51 - 76 Max. Working Pressure 25 Bar @ 20°C  
 SIZE 101.6 Max. Working Pressure 16 Bar @ 20°C

### ORDERING SPECIFICATIONS....

Specify:

- Description
- Code No.
- Size
- Material
- Surface Polish Requirements
- Quantity

### Example

Description	Item No	Size	Material	Surface	Quantity
SM-13	8022 05100	DN51	1.4301	Ra≤0.8µm	500

### NOTES THE DIMENSION TABLES

- All Dimensions are according to SMS standard.
- Wall Thickness: Fittings OD25mm-OD51mm sizes are manufactured with 1.25 mm wall thickness. The OD63.5 fittings size is manufactured with 1.5mm wall thickness. The OD76.1 fittings size is manufactured with 1.6mm wall thickness. And the OD101.6 fittings size is manufactured with 2.0mm wall thickness.

\*\*All measurements are in millimeters (mm)  
 Conversion to inches, 25.4mm=1inch

# SMS UNIONS

Part for Inch tubes

Wall Thickness: Fittings OD25-OD51mm sizes can also manufactured with 1.6mm wall thickness.

Finish: OD: Semi bright. ID: Semi bright

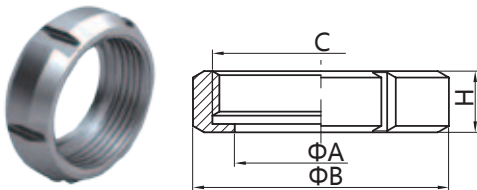
Connections: Welding ends

Seals: Silicone

Thread: Round type 

1.3

## SMS-13 Nut

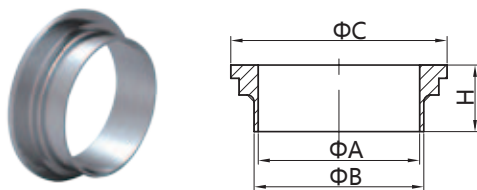


### Basic Ordering Number: 8022

NO.	Size	A	B	C	H
8022 02500	25	32	51	Rd40×1/6"	20
8022 03200	32	40.5	60	Rd48×1/6"	22
8022 03800	38	48	74	Rd60×1/6"	25
8022 05100	51	61	84	Rd70×1/6"	26
8022 06350	63.5	74	100	Rd85×1/6"	30
8022 07600	76	87	114	Rd98×1/6"	32
8022 10160	101.6 (Max)	117	154	Rd132×1/6"	45
8022 10160	101.6 (Min)	113	140	Rd125×1/4"	32

\*\*Only 1.4301 is available.

## SMS-14 Welding liner

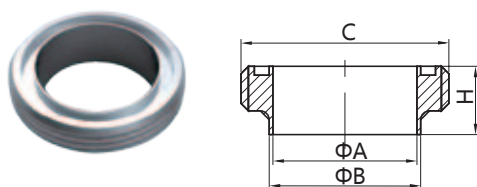


### Basic Ordering Number: 8023

NO.	Size	A	B	C	H
8023 02500	25	22.5	25	35.5	15
8023 03200	32	29.5	32	43.5	15
8023 03800	38	35.5	38	55	20
8023 05100	51	48.5	51	65	20
8023 06350	63.5	60.5	63.5	80	24
8023 07600	76	72.9	76.1	93	24
8023 10160	101.6 (Max)	97.6	101.6	127	30
8023 10160	101.6 (Min)	97.6	101.6	118	30

\*\*1.4301 and 1.4404 are available.

## SMS-15 Welding male



### Basic Ordering Number: 8024

NO.	Size	A	B	C	H
8024 02500	25	22.5	25	Rd40×1/6"	19
8024 03200	32	29.5	32	Rd48×1/6"	19
8024 03800	38	35.5	38	Rd60×1/6"	23
8024 05100	51	48.5	51	Rd70×1/6"	23
8024 06350	63.5	60.5	63.5	Rd85×1/6"	27
8024 07600	76	72.9	76.1	Rd98×1/6"	27
8024 10160	101.6 (Max)	97.6	101.6	Rd132×1/6"	35
8024 10160	101.6 (Min)	97.6	101.6	Rd125×1/4"	30

\*\*1.4301 and 1.4404 are available.

NOTE! Treatment: CNC Finished


\*\*All measurements are in millimeters (mm)  
Conversion to inches, 25.4mm=1inch

# SMS UNIONS

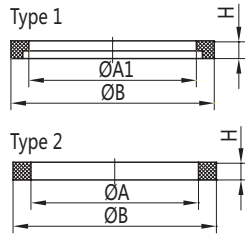
Part for Inch tubes

Wall Thickness: Fittings OD25-OD51mm sizes can also manufactured with 1.6mm wall thickness.

## TUBES AND FITTINGS **GEMO**

Finish: OD: Semi bright. ID: Semi bright  
 Connections: Welding ends  
 Seals: Silicone  
 Thread: Round type 

### Seal ring

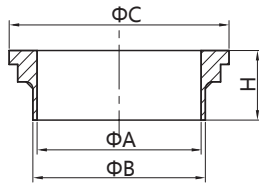


#### Basic Ordering Number: 8025

NO.	Size	A	A1	B	H
8025 02500	25	25	22.7	31.8	5.3
8025 03200	32	32	29.7	39.8	5.3
8025 03800	38	38	35.7	47.8	5.3
8025 05100	51	51	45.5	60.8	5.3
8025 06350	63.5	63.5	60.7	73.2	5.3
8025 07600	76	76	72.3	85.8	5.3
8025 10160	101.6	101.6	97.8	103.8	5.3

\*\*Silicone and EPDM are available.

### SMS-14S Welding liner

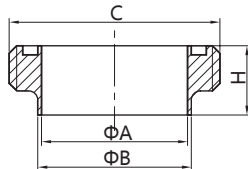


#### Basic Ordering Number: 8026

NO.	Size	A	B	C	H
8026 02500	25	22.5	25	35.5	10
8026 03200	32	29.5	32	43.5	10
8026 03800	38	35.5	38	55	11
8026 05100	51	48.5	51	65	13
8026 06350	63.5	60.5	63.5	80	13
8026 07600	76	72.9	76.1	93	14
8026 10160	101.6 (Max)	97.6	101.6	127	16
8026 10160	101.6 (Min)	97.6	101.6	118	16

\*\*1.4301 and 1.4404 are available.

### SMS-15S Welding male



#### Basic Ordering Number: 8027

NO.	Size	A	B	C	H
8027 02500	25	22.5	25	Rd40×1/6"	15
8027 03200	32	29.5	32	Rd48×1/6"	15
8027 03800	38	35.5	38	Rd60×1/6"	20
8027 05100	51	48.5	51	Rd70×1/6"	20
8027 06350	63.5	60.5	63.5	Rd85×1/6"	24
8027 07600	76	72.9	76.1	Rd98×1/6"	24
8027 10160	101.6 (Max)	97.6	101.6	Rd132×1/6"	28
8027 10160	101.6 (Min)	97.6	101.6	Rd125×1/4"	28

\*\*1.4301 and 1.4404 are available.

NOTE! Treatment: CNC Finished

\*\*All measurements are in millimeters (mm)  
 Conversion to inches, 25.4mm=1inch

# SMS UNIONS

Part for Inch tubes

Wall Thickness: Fittings OD25-OD51mm sizes can also manufactured with 1.6mm wall thickness.

Finish: OD: Semi bright. ID: Semi bright

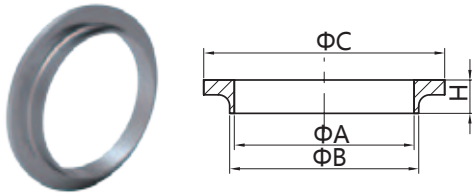
Connections: Welding ends

Seals: Silicone

Thread: Round type 

1.3

## SMS-14SS Welding liner

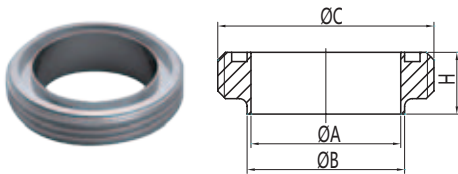


### Basic Ordering Number: 8028

NO.	Size	A	B	C	H
8028 02500	25	22.5	25	35.5	7.5
8028 03200	32	29.5	32	43.5	7.5
8028 03800	38	35.5	38	55	9
8028 05100	51	48.5	51	65	9
8028 06350	63.5	60.5	63.5	80	9
8028 07600	76	72.9	76.1	93	10
8028 10160	101.6 (Max)	97.6	101.6	127	12
8028 10160	101.6 (Min)	97.6	101.6	118	12

\*\*1.4301 and 1.4404 are available.

## SMS-15SS Welding male

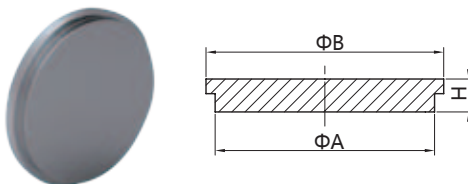


### Basic Ordering Number: 8029

NO.	Size	A	B	C	H
8029 02500	25	22.5	25	RD40×1/6"	15
8029 03200	32	29.5	32	RD48×1/6"	15
8029 03800	38	35.5	38	RD60×1/6"	18
8029 05100	51	48.5	51	RD70×1/6"	20
8029 06350	63.5	60.5	63.5	RD85×1/6"	20
8029 07600	76	72.9	76.1	RD98×1/6"	21
8029 10160	101.6 (Max)	97.6	101.6	RD125×1/4	26

\*\*1.4301 and 1.4404 are available.

## SMS-14B Blank liner



### Basic Ordering Number: 8030

NO.	Size	A	B	H
8030 02500	25	31.5	35.5	7.5
8030 03200	32	40	43.5	8
8030 03800	38	31.5	55	8
8030 05100	51	40	65	8
8030 06350	63.5	73.5	80	9
8030 07600	76	86.5	93	11
8030 10160	101.6 (Max)	116.5	127	12
8030 10160	101.6 (Min)	112.5	118	12

\*\*1.4301 and 1.4404 are available.


NOTE! Treatment: CNC Finished

\*\*All measurements are in millimeters (mm)  
Conversion to inches, 25.4mm=1inch

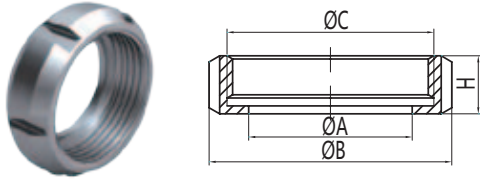
# SMS UNIONS

Part for Inch tubes

Wall Thickness: Fittings OD25-OD51mm sizes can also manufactured with 1.6mm wall thickness.

Finish: OD: Semi bright. ID: Semi bright  
 Connections: Welding ends  
 Seals: Silicone  
 Thread: Round type 

## SMS-13RS Nut

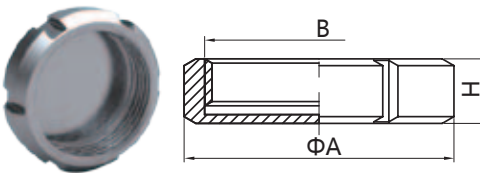


### Basic Ordering Number: 8031

NO.	Size	A	B	C	H
8031 02500	25	32.3	50	Rd40×1/6"	18
8031 03200	32	40.3	58	Rd48×1/6"	18
8031 03800	38	48.5	72	Rd60×1/6"	21
8031 05100	51	60.5	82	Rd70×1/6"	23
8031 06350	63.5	74	98	Rd85×1/6"	23
8031 07600	76	87	111	Rd98×1/6"	26
8031 10160	101.6 (Max)	113	138	Rd125×1/4"	30

\*\*Only 1.4301 is available.

## SMS-13RB Blank nut

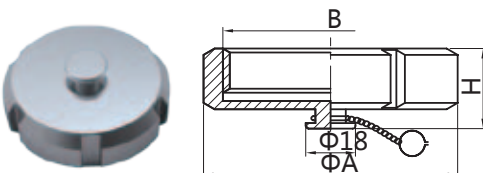


### Basic Ordering Number: 8032

NO.	Size	A	B	H
8032 02500	25	51	Rd40×1/6"	20
8032 03200	32	60	Rd48×1/6"	22
8032 03800	38	74	Rd60×1/6"	25
8032 05100	51	84	Rd70×1/6"	26
8032 06350	63.5	100	Rd85×1/6"	30
8032 07600	76	114	Rd98×1/6"	32
8032 10160	101.6 (Max)	154	Rd132×1/6"	45
8032 10160	101.6 (Min)	140	Rd125×1/4"	32

\*\*Only 1.4301 is available.

## SMS-13RBN Blank nut with boss



### Basic Ordering Number: 8033

NO.	Size	A	B	H
8033 02500	25	51	Rd40×1/6"	27
8033 03200	32	60	Rd48×1/6"	29
8033 03800	38	74	Rd60×1/6"	32
8033 05100	51	84	Rd70×1/6"	33
8033 06350	63.5	100	Rd85×1/6"	37
8033 07600	76	114	Rd98×1/6"	39
8033 10160	101.6 (Max)	154	Rd132×1/6"	52
8033 10160	101.6 (Min)	140	Rd125×1/4"	39

\*\*Only 1.4301 is available.

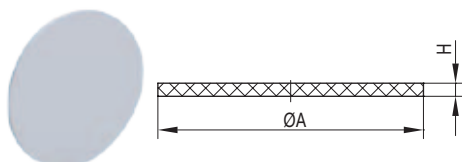
NOTE! Treatment: CNC Finished

\*\*All measurements are in millimeters (mm)  
 Conversion to inches, 25.4mm=1inch

Wall Thickness: Fittings OD25-OD51mm sizes can also be manufactured with 1.6mm wall thickness.

1.3

### SP2 Plate seal



### Basic Ordering Number: 8034

NO.	Size	A	H	H(PTFE)
8034 02500	25	40	3	1.5
8034 03200	32	48	3	1.5
8034 03800	38	60	3	1.5
8034 05100	51	70	3	1.5
8034 06350	63.5	85	3	1.5
8034 07600	76	98	3	1.5
8034 10160	101.6	125	3	1.5

\*\*Silicone and EPDM are available.

NOTE!

\*\*All measurements are in millimeters (mm)  
Conversion to inches, 25.4mm=1inch



## P&E Flow Technology Profile

P&E Flow Technology is provider of professional products for the fluid industry and related solutions.

We are committed to brew processing, beverage processing, Dairy and Foodstuff processing, pharmaceutical industry, water treatment works, Bio-engineering and fluid technology industry

## P&E Flow Technology Brands

**CKAN**

**ZIMANI**

**GEMO**

**Meatier**

**Shst**

How to contact P&E Flow Technology  
[www.pestainless.com](http://www.pestainless.com)

GEMO Products Services  
Please visit and contact us:  
[www.gemoindustries.com](http://www.gemoindustries.com)

Technical Support  
[Tech@gemoindustries.com](mailto:Tech@gemoindustries.com)

Service  
[Info@gemoindustries.com](mailto:Info@gemoindustries.com)

Dealer Management  
[DealerManagement@gemoindustries.com](mailto:DealerManagement@gemoindustries.com)

## P&E Flow Technology

Address: Shacheng Street, WenZhou, P.R China.  
Post Code: 325000

Service, Sales  
Tel: +86-577-85826961  
Email: [Info@pestainless.com](mailto:Info@pestainless.com)

Dealer Management  
Email: [DealerManagement@pestainless.com](mailto:DealerManagement@pestainless.com)

Copyright © 2011 P&E

GEMO is a trademark registered and owned by P&E Flow Technology. P&E reserves the right to change specifications without prior notify action.